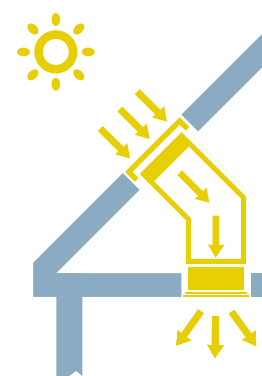


Sunlite Light Tube System

A Keylite Sunlite transports natural daylight into areas where conventional pitched or flat roof windows cannot be used.



Features

- ▶ The Keylite Sunlite System consists of a roof mounted external glazing element designed to look like a small Keylite Roof Window.
- ▶ Transforms dark or windowless rooms, considered ideal for bathrooms, stairways and corridors.
- ▶ Saves energy through reducing the requirement of artificial light.
- ▶ Available with a 'Rigid' or 'Flexible' light tube to suit your roof design. These tubes are lined with a mirrored finish in order to provide optimum specular reflectance.
- ▶ Natural daylight enters the Sunlite via the external glazing element and is reflected down the intermediate tubes and into the property through the double glazed ceiling diffuser.
- ▶ Keylites Sunlite ceiling diffuser is uniquely designed so that it is magnetically secured to the ceiling; the benefits of such an innovation are the reduction in internal fixings as well as the ability to easily remove the diffuser for cleaning purposes
- ▶ The diffuser may also be adapted to allow for additional ventilation purposes below.
- ▶ Square ceiling diffusers are available upon request for installation in place of square tiles on a suspended ceiling.
- ▶ The unique connections on the one-piece glazing element allow for an easier installation due to the snap in twist connectors located along the locking ring resulting in a reduction of industrial tape being used.
- ▶ An optional ventilation flap is provided with the external glazing element so as to combat the risk of condensation occurring.



Sunlite Window System		Size	
		350mmø	450mmø
Flush Fit Glass Sunlite	Rigid System	SLRS 350	SLRS 450
	Flexi-System	SLFS 350	SLFS 450
Polycarbonate Dome Sunlite	Rigid System	-	-
	Flexi-System	-	-
Flat Roof Polycarbonate Sunlite	Rigid System	SLRS 350	SLRS 450
	Flexi-System	SLFS 350	SLFS 450

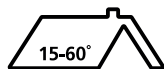
Sunlite Accessories

Sizes	Circular Fluorescent Lamps	Rigid Extension (625mm)
350mmø	SLL 350	SLRE 350
450mmø	SLL 450	SLRE 450

	Recommended Usage	
	350 mm (Diameter)	450 mm (Diameter)
Rigid tube	Bathroom, Hallway, Small Landing Suitable for rooms 4m x 4m	Bathroom, Landing, Offices, Corridors Suitable for rooms 5m x 5m
Flexi-tube Max. recommended length 2m	En suite, WC, Walk-in-wardrobe	Bathroom, Hallway, Small Landings Suitable for rooms 4m x 4m

Note: When placing your order please specify Tile, Slate or Flat Roof Flashing. If roof void is more than 2m please call the Keylite Technical Team.

Pitched Roof System



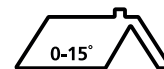
Flush Fit Glass Sunlite

- Diameter**
- ▶ 450mm
 - ▶ 350mm

- Tube length**
- ▶ 2m



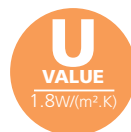
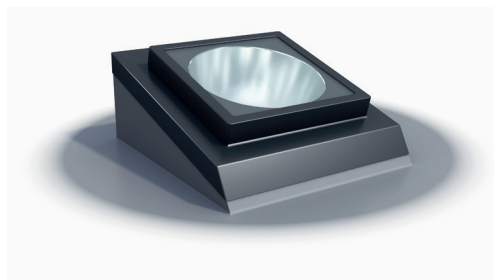
Flat Roof System



Flat Roof Sunlite

- Diameter**
- ▶ 450mm
 - ▶ 350mm

- Tube length**
- ▶ 800mm



Rigid Light Tube System

For optimum performance
Keylite's rigid tube system is made using a hard wearing, mirror finished, polished aluminium tube with 98% reflectance.

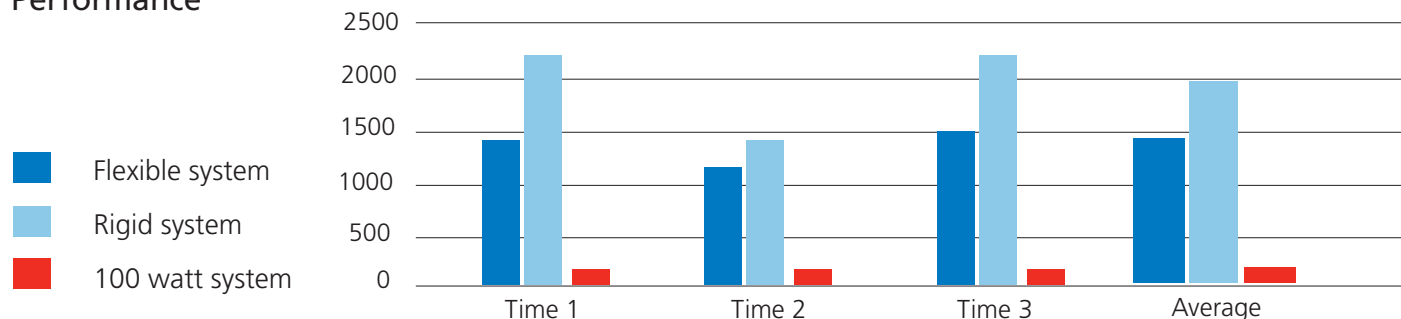


Flexi Light Tube System

For versatility
Recommended for installations where obstructions within the roof prohibit the use of a rigid system.



Performance



GB

Unit 3 Gateway Road, Burton Gateway,
Burton upon Trent, DE13 8FL

T: +44 (0) 28 8676 7512
E: technicalsupport@keylite.co.uk

NI & ROI

KG2, Ballyreagh Industrial Est. Sandholes
Road, Cookstown, Co. Tyrone, BT80 9DG