

NOTES

X NUMBER REQUIRED

GLASS SPEC:
 OUTER : HST TOUGHENED GLASS
 CAVITY : 16mm ARGON FILLED + WARM EDGE SPACER + DC3363 UV RESISTANT SILICONE EDGE SEAL
 INNER : HST TOUGHENED OR LAMINATED GLASS + POLISHED EDGES + LOW E COATING

RGR HIGHLY RECOMMENDS A CWCT CLASS 1 OR CLASS 2 NON-FRAGILE OPTION FOR MOST ROOFLIGHTS

- LIGHT TRANSMISSION = 78 % (AS STANDARD)
- CENTRE PANE U VALUE = 1.1 W/m².K (AS STANDARD)
- SOLAR G VALUE = 0.63 (AS STANDARD)
- ACOUSTIC REDUCTION = 34 (6/6) 39 (6/8.8) Rw dB
- AIR PERMEABILITY = CWCT CLASS A4
- WEATHER RESISTANCE = CWCT CLASS A7
- WIND RESISTANCE = CWCT CLASS E2400
- WEIGHT = SIZE DEPENDANT, ASK RGR TECHNICAL FOR ADVICE
- AA FIRE-RATED: GLASS AND FRAME ARE AA DESIGNATION (NATIONAL CLASS) OR bROOF (T4) EUROPEAN CLASS AND EURO CLASS A1 NON-COMBUSTIBLE

ROOFLIGHT ORDER SIZE = ROOF STRUCTURAL OPENING SIZE.

GLASS BONDED TO GLAZING FRAME WITH GLAZING SECURITY TAPE & SILICONE.

MAX THICKNESS ROOF FINISH 6mm. PLEASE INFORM RGR IF YOUR FINISH EXCEEDS THIS.

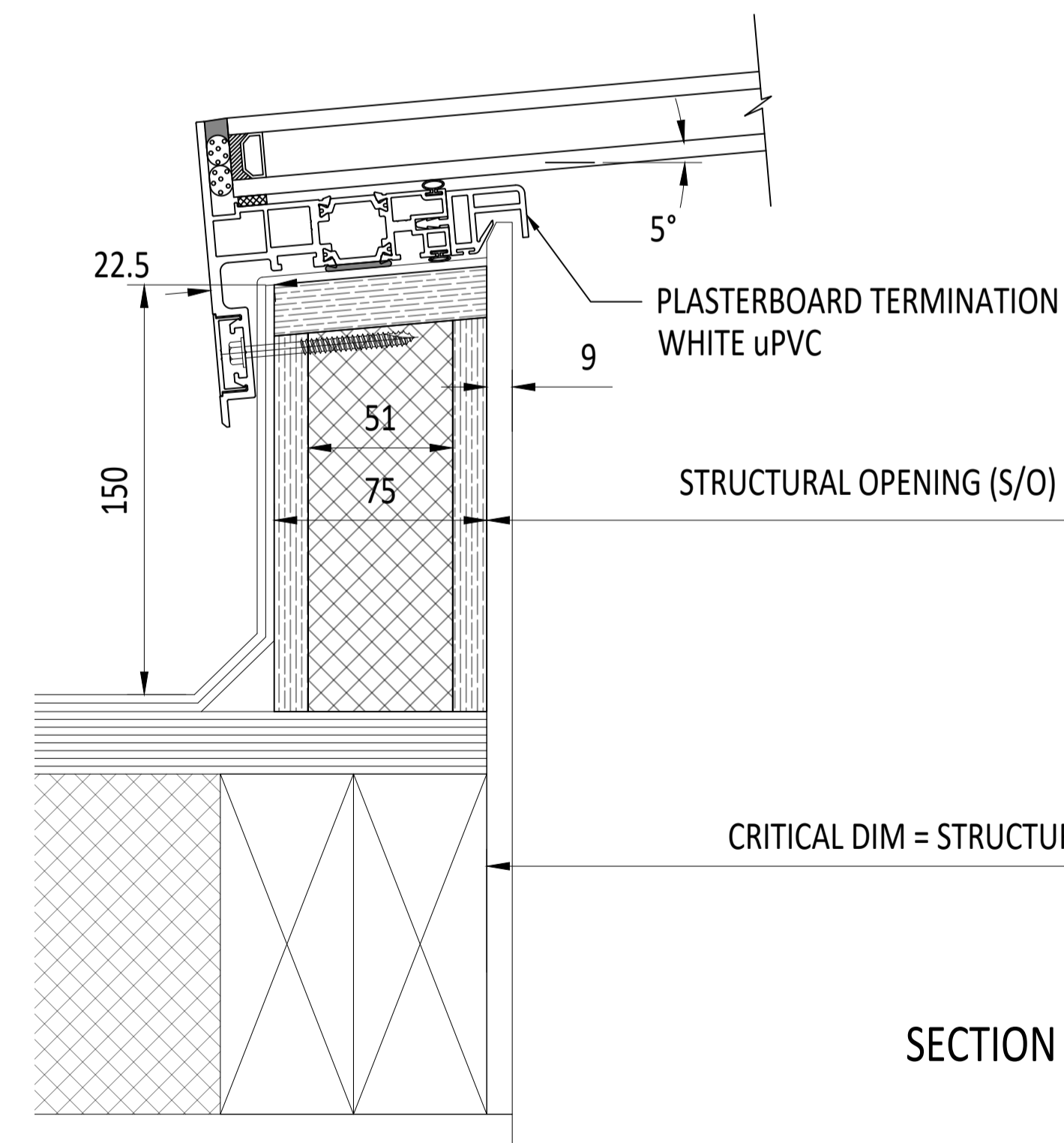
KERB WITH 5° FALL AS STANDARD TO HELP SHED WATER. LARGER UNITS MAY REQUIRE STEEPER PITCHES, CLIENT RESPONSIBLE FOR FINAL PITCH, PACK THE BOTTOM OF THE BACK AND SIDE EDGES OF THE KERB AS NECESSARY.

PRODUCT U_d-VALUE = AS LOW AS 0.5 W/m².K. THIS IS A COMBINED U-VALUE OF KERB AND ROOFLIGHT TOGETHER. KERB AND FRAME EXCEED THE LIMITING VALUES OF APPROVED DOCUMENT PART L. U_d IS ROOFLIGHT SIZE DEPENDANT.

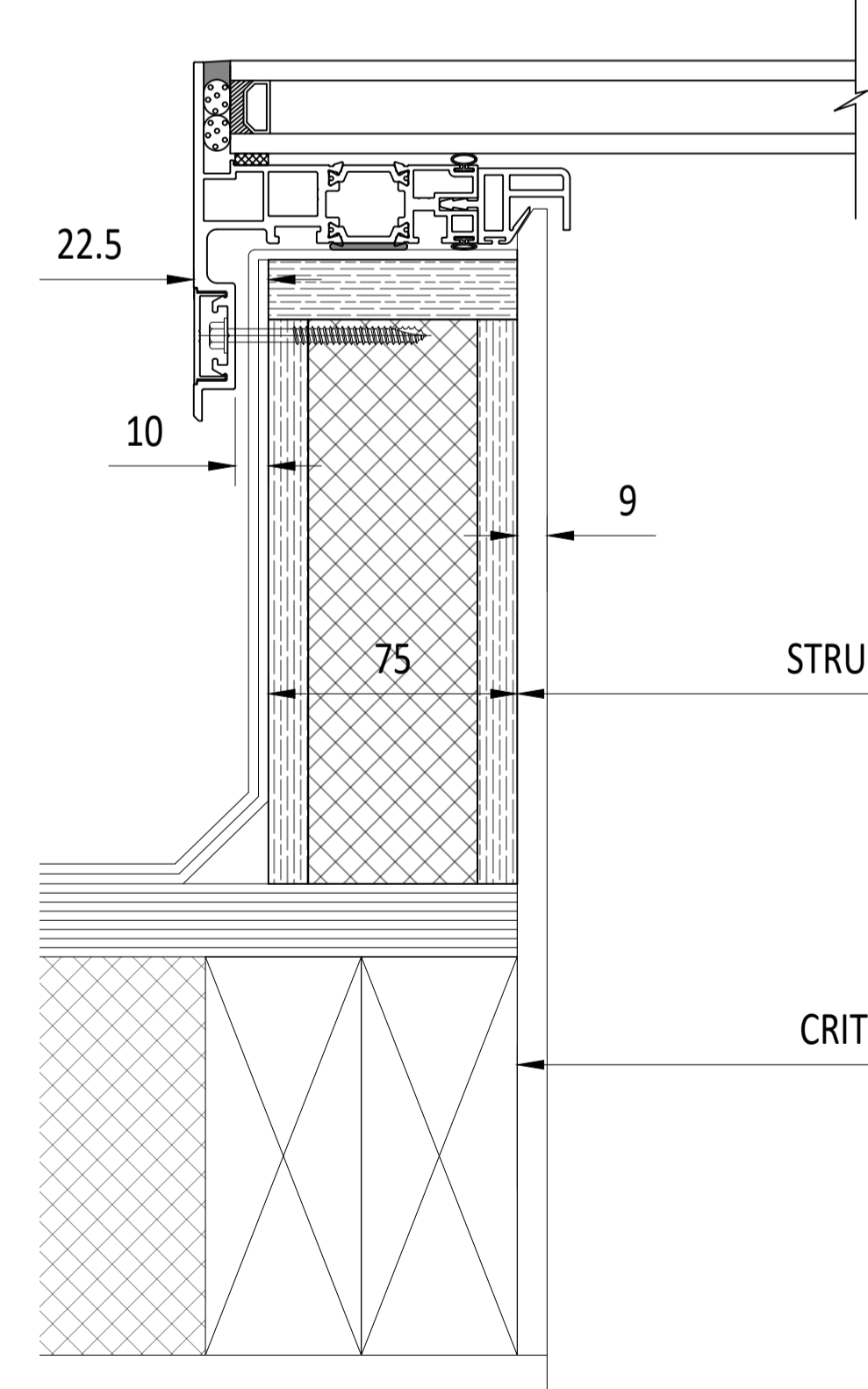
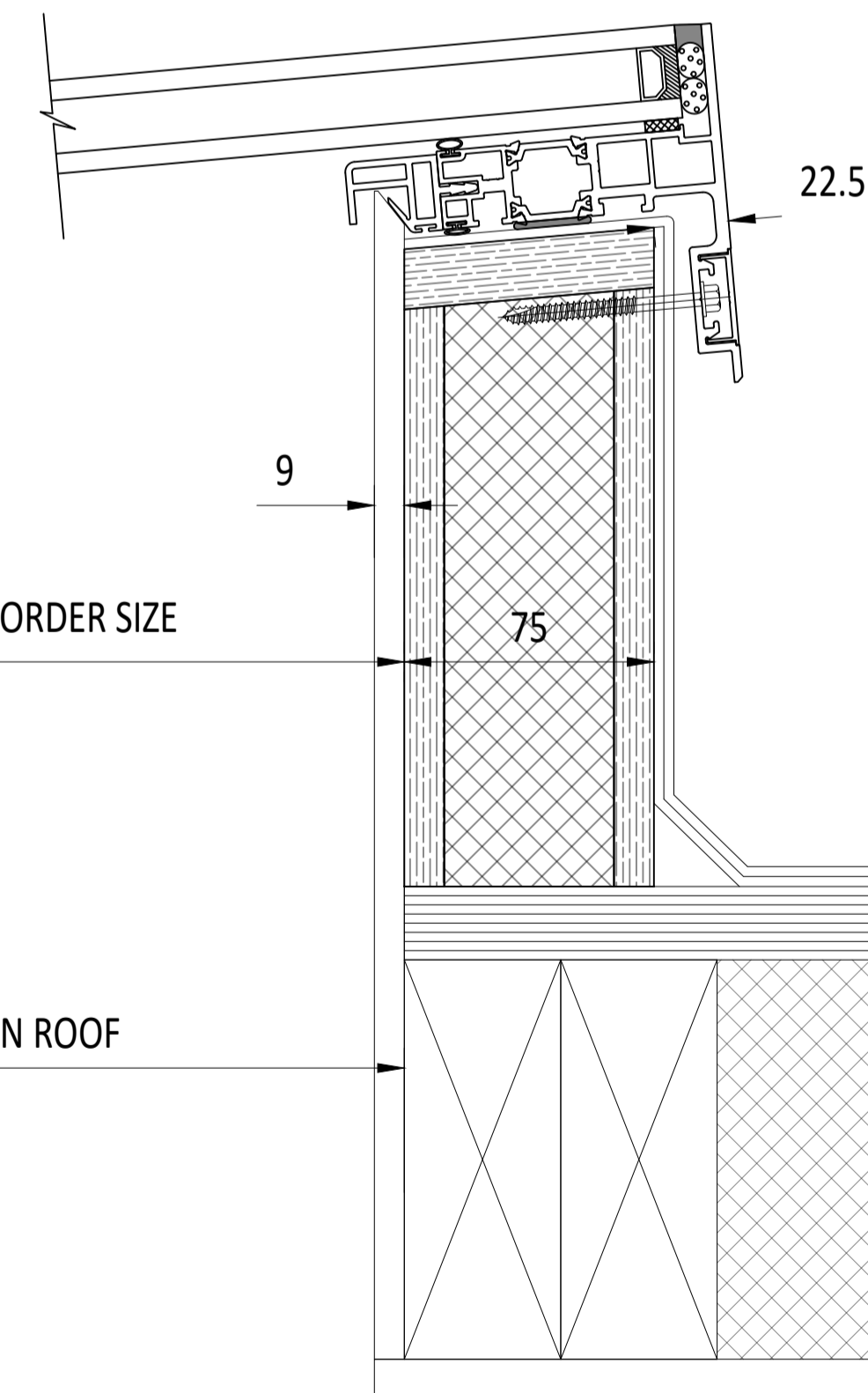
DESIGN LOADS: 750N/m² WIND 640N/m² SNOW AS STANDARD
 OTHER LOADS TO BE SPECIFIED BY CLIENT.

TIMBER SUSTAINABLY SOURCED FROM FSC MANAGED FORESTS, AND RECLAIMED TIMBER.

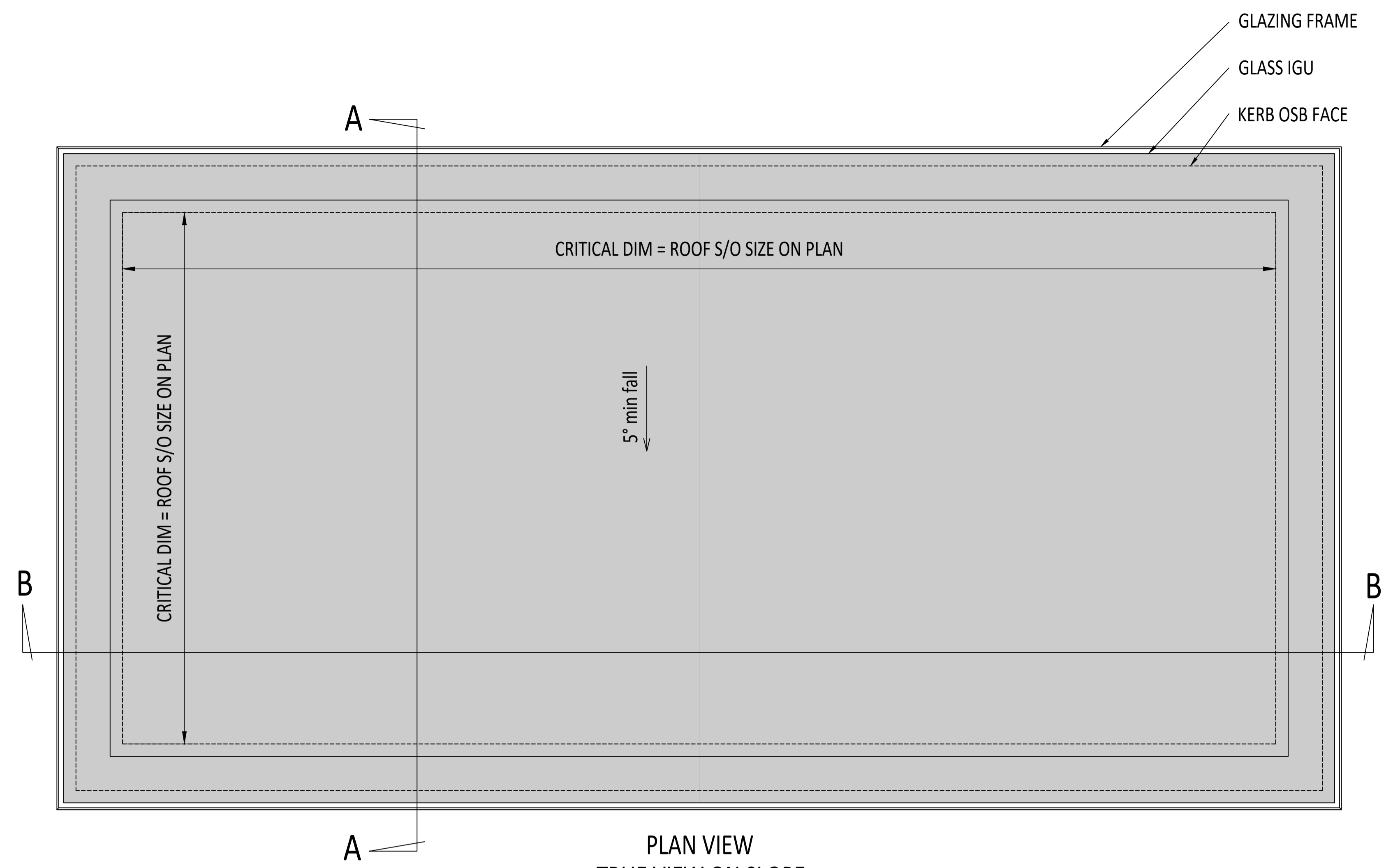
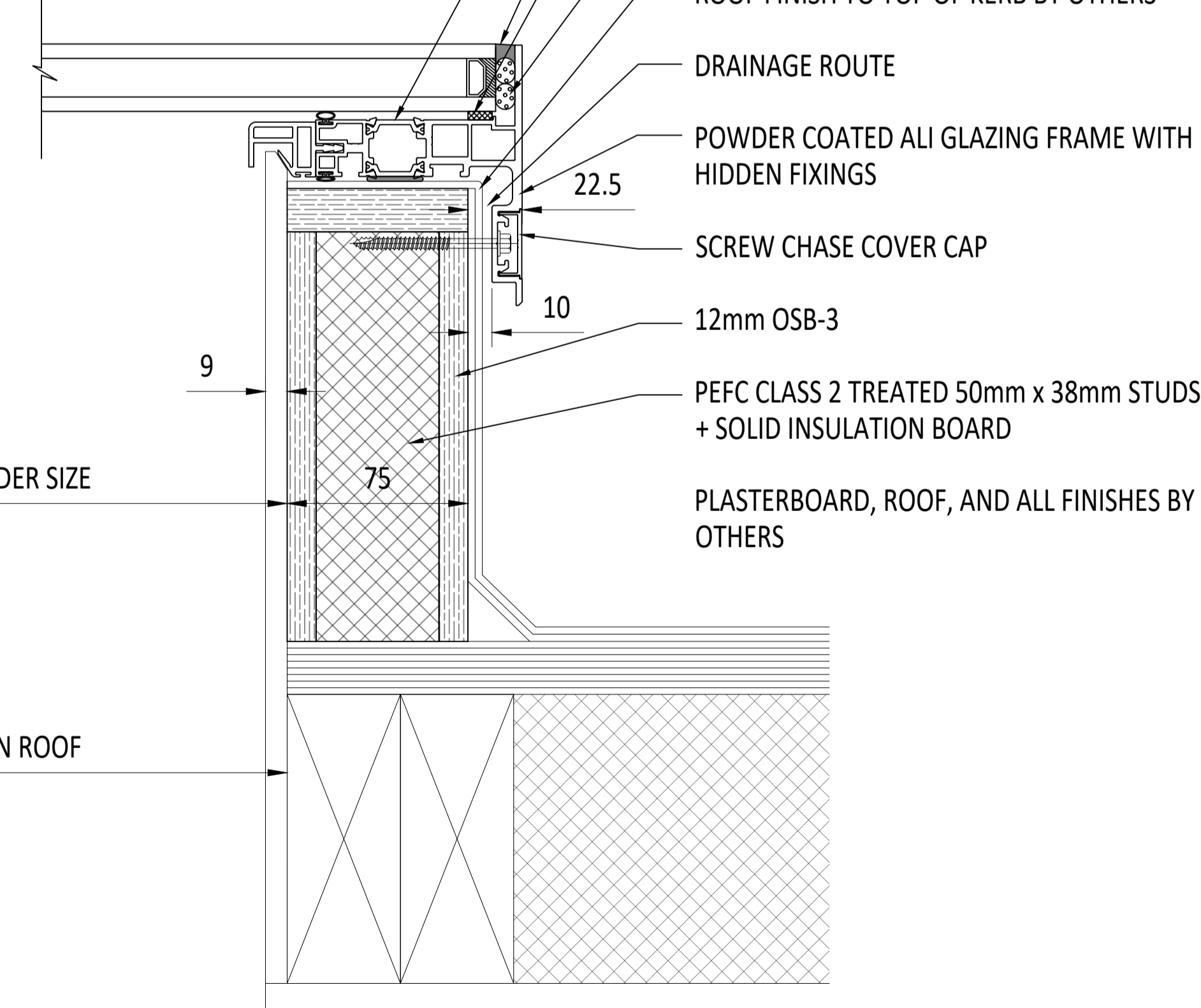
SOLID CELOTEX INSULATION BOARD.



SECTION A-A



SECTION B-B



PLAN VIEW
TRUE VIEW ON SLOPE

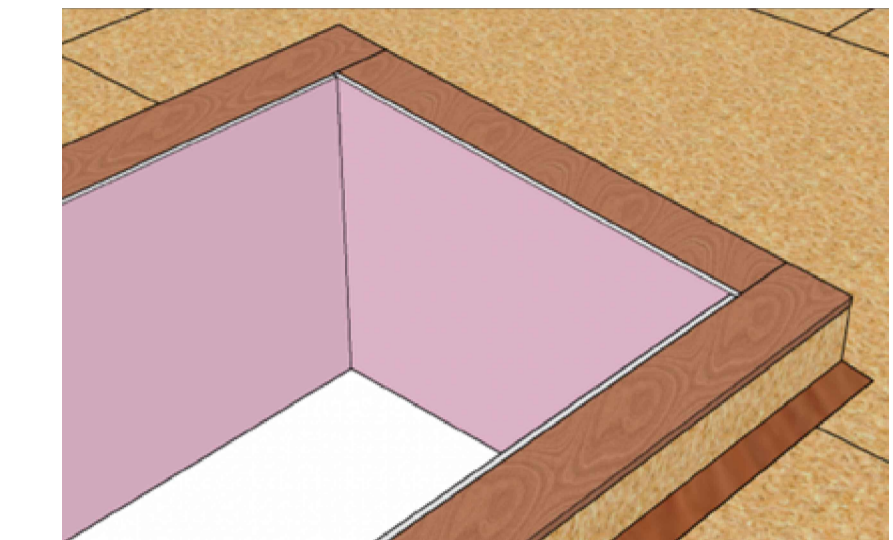
CDM :HAZARD IDENTIFICATION - HANDLING MATERIALS

BE AWARE OF SHARP EDGES AND CORNERS WHEN HANDLING MATERIALS. MOST EDGES AND CORNERS WILL BE DEBURRED BUT THERE IS STILL A SMALL RISK. WEAR APPROPRIATE PPE REQUIRED FOR THE TASK. THE MHOR 1992 SET OUT A CLEAR RANKING OF MEASURES FOR DEALING WITH RISKS FROM MANUAL HANDLING. THESE ARE:

- **FIRST** : AVOID HAZARDOUS MANUAL HANDLING OPERATIONS SO FAR AS IS REASONABLY PRACTICABLE;
- **SECOND** : ASSESS ANY HAZARDOUS MANUAL HANDLING OPERATIONS THAT CANNOT BE AVOIDED; AND
- **THIRD** : REDUCE THE RISK OF INJURY SO FAR AS IS REASONABLY PRACTICABLE.

HAND PROTECTION (MANDATORY) TO: BS EN 388:1994. ROOFLIGHTS MUST ONLY BE INSTALLED BY COMPETENT CONTRACTORS. UNLESS DESIGNED FOR CWCT CLASS 0 OR CLASS 1, DANGER OF DAMAGING GLASS IF IT IS WALKED UPON. IF GLASS IS CLASSED AS NON-FRAGILE IT SHOULD STILL NOT BE WALKED ON UNLESS DESIGNED SO. USE SPREADER BOARDS. REFER TO RISK ASSESSMENT FOR FURTHER DETAILS.

- FALL FROM HEIGHTS DURING INSTALLATION
- MANUAL HANDLING
- FINGER TRAP



GENERIC KERB IMAGE FROM INSTALL GUIDE



GENERIC KERB IMAGE

IF IN DOUBT ASK DO NOT SCALE

IT IS THE RESPONSIBILITY OF THE KERB DESIGNER TO ENSURE THE KERB WILL BE STRUCTURALLY ADEQUATE TO HOLD THE ROOFLIGHT. KERBS SHOWN ON THESE DRAWINGS ARE FOR ILLUSTRATION PURPOSES ONLY.

The manufacturer would advise an installation with a minimum pitch of 5° for rooflight units to minimize water pooling. Whilst the product can be installed flat without detriment to the warranty, the manufacturer cannot be held responsible for any excessive pooling of water to the surface of the rooflight, post installation. If installed without an adequate fall, larger units may require a greater fall. The final decision on amount of fall required must be made by the client and relayed to the installer.

THIS DRAWING MUST NOT BE COPIED OR PASSED TO A THIRD PARTY WITHOUT WRITTEN CONSENT FROM THE MANUFACTURER.

CHECKED	C. M.	TOLERANCE UNLESS OTHERWISE STATED	±5
DATE	30-03-2023	DIMENSIONS IN	MM
DRAWN	D. P.	SCALE	1:2, 1:5 @ A1
DATE	30-03-2023		

MATERIAL
ALUMINIUM, TIMBER, GLASS

FINISH
MARINE GRADE POLYESTER POWDER COAT OPTIONS:
RAL 7016 ANTHRACITE GREY,
RAL 9005 BLACK, 30% GLOSS

REV	AMENDMENTS	SIGNED	CHECKED	DATE

Roofglaze Rooflights Ltd,
11 Howard Road, Eaton Socon,
St Neots, Cambs, PE19 8ET
Telephone 01480 474797

DRAWING N°
RGR-FTK-23-100

TITLE:
**SKYWAY COMPLETE
FIXED ON TIMBER KERB**

REV
ROOFGLAZE

SIZE
A1

Lighting
by nature™